

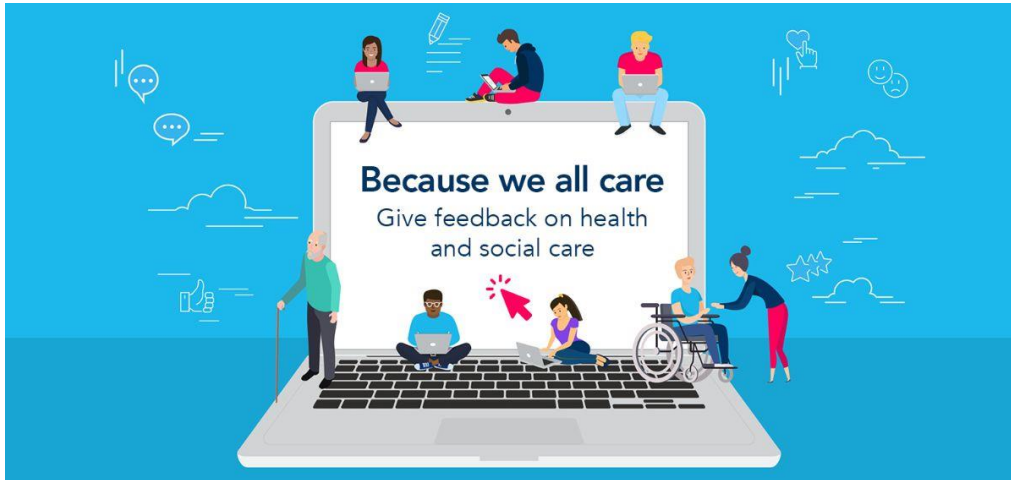
Support our new campaign #BecauseWeAllCare

COVID-19 has resulted in changes to our NHS and social care services. 62% of people in the South West say they are more likely to take steps to improve health and social care services since the pandemic. In response, we've joined the national #BecauseWeAllCare campaign, calling on Gloucestershire residents to share their experiences of care during COVID-19 to help services reflect, recover, and rebuild.

We are particularly keen to understand the impact on social care, and about the changes to services for people with regular ongoing health and care needs.

Share your feedback and encourage others to support our campaign by completing our online survey: smartsurvey.co.uk/s/CoronavirusHWG/ or call us on freephone 0800 652193 or 01452 504989.

Read what people are saying about Gloucestershire health and social care during COVID-19, and find out what national research has revealed about how people in the South West view feedback on care. [Read more...](#)



We also want to hear from Gloucestershire residents about...

- People's experience of accessing GP services.
- Young people and children's experience of accessing health and social care services.
- Care and support for people who feel alone and isolated.

[Get in touch](#) with us to share your stories.

Tell us what matters to you and help make health and social care better for your community

Healthwatch Gloucestershire is the county's independent health and social care champion. We exist to ensure that people are at the heart of care. Our dedicated team of staff and volunteers listen to what people like about local health and care services, and what could be improved. These views are then shared with the decision-making organisations in the county, so together we can make a real difference.

Copyright © 2020 Healthwatch Gloucestershire, All rights reserved.

01452 504989 | 0800 652 5193

**Healthwatch Gloucestershire • 13 Wheatstone Court, Davy Way • Waterwells Business Park •
Quedgeley, GL2 2AQ • United Kingdom**

<https://www.healthwatchgloucestershire.co.uk>