



New magazine highlights health and care stories

A new mini-magazine has been launched to highlight local people's experiences of health and care services in Gloucestershire.

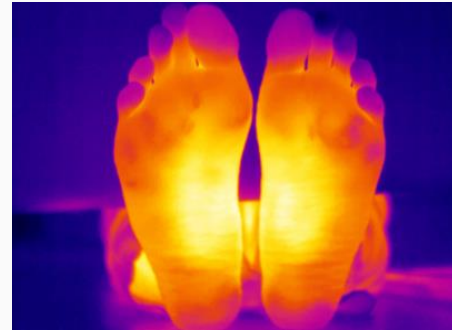
The county's independent health and care champion Healthwatch Gloucestershire has produced 'Highlight' to share stories of its work with patients, carers, families and health organisations.

Julia Butler-Hunt, Healthwatch Gloucestershire Manager, said: "We're very excited to launch this first edition and hope this small magazine captures some of what we do and encourages members of the public to talk to us and share their views on local health and social care services."

The A5 publication will be distributed to GP surgeries in Gloucestershire, along with local hospitals, dentists, community centres and libraries. Read the first edition [here](#).

Help develop innovative device for diabetics

People living with diabetes in Gloucestershire are being asked to help develop an innovative device which could improve the lives of thousands of people living with the same condition across the country.



The National Physical Laboratory (NPL) is developing a heat mapping device which detects diabetic foot ulcers before they develop, and the world-leading measurement institute now wants the views of those living with the condition to better understand how diabetes patients interact with technology.

Research and Insight consultancy Evolving Communities are carrying out a short survey to get people's views on the device. [Read more](#) and take part in the [survey](#).

Priorities for next year revealed in new Impact Report

Healthwatch Gloucestershire has set out how it will ensure the public's voice is heard over the next year in its latest Impact Report.

The report also highlights the impact the organisation has had over the last year and shares how the independent health and care champion operates.



Priorities include:

- Mental Health - overseeing the quality of adult and young people's mental health services by listening to those who use these services.
- Children and young people - engaging with children and young people in schools.
- Social Care - engaging with patients and their carers and staff to find out their experiences of receiving care under numerous schemes.
- Primary Care - listening to local people to find out about their experiences of accessing their GP services.

Julia Butler-Hunt, Manager at Healthwatch Gloucestershire said: "Our priorities are informed by what people tell us. We will also be taking an interest in the proposed merger of the 2gether Trust and Gloucestershire Care Services and monitoring the ongoing consultation process of the Forest of Dean community hospital."

Read the [Impact Report](#).

Out and about this month

Share your views on local health and care services with us or find out more about volunteering with Healthwatch Gloucestershire.

We will be at the following over the next four weeks:

- Singing for the Brain group - run by the Alzheimer's Society in Shurdington, Cheltenham on Wednesday, 20 June, 1.30pm - 3.30pm



- Fair Shares Community Based Project Lunch Club on Monday, 25 June, 12noon - 3pm, at Chequers Bridge Community Centre, Gloucester
- Fair Shares Art Group - details as above - on Tuesday 26 June, 1.30 - 4.30pm
- Exercise and Scrabble Group, 27 June - Prestbury Memorial Trust Charity, Cheltenham, on Wednesday 27 June, 1.30 - 2.30pm
- Healthwatch Gloucestershire will also have a stand at the annual conference of The Survivors of Bereavement by Suicide (SOBS) charity on Thursday 5 July, 9am - 4:15pm at The Pavilion, Hatherley Lane, Cheltenham, GL51 6PN. [Find out more..](#)

For an up to date list of events visit the [events calendar](#).

Healthwatch Gloucestershire is the county's independent health and care champion. We exist to ensure that people are at the heart of care. Our dedicated team of staff and volunteers listen to what people like about local health and care services, and what could be improved. These views are then shared with the decision-making organisations in the county, so together we can make a real difference.



The Healthwatch Gloucestershire service is run by Evolving Communities CIC, a community interest company limited by guarantee and registered in England and Wales with company number 08464602. The registered office is at Unit 5 Hamptor Park West, Melksham, SN12 6LH

Copyright © 2018 Healthwatch Gloucestershire. All rights reserved.

01452 504989

**Unit F13 Kestrel Court, Waterwells Drive, Waterwells Business Park,
Quedgeley, GLOUCESTER GL2 2AT**